

PART D: CLICKVIEW WIRELESS AND CLICKVIEW HOME

1. Introduction to ClickView Wireless and ClickView Home

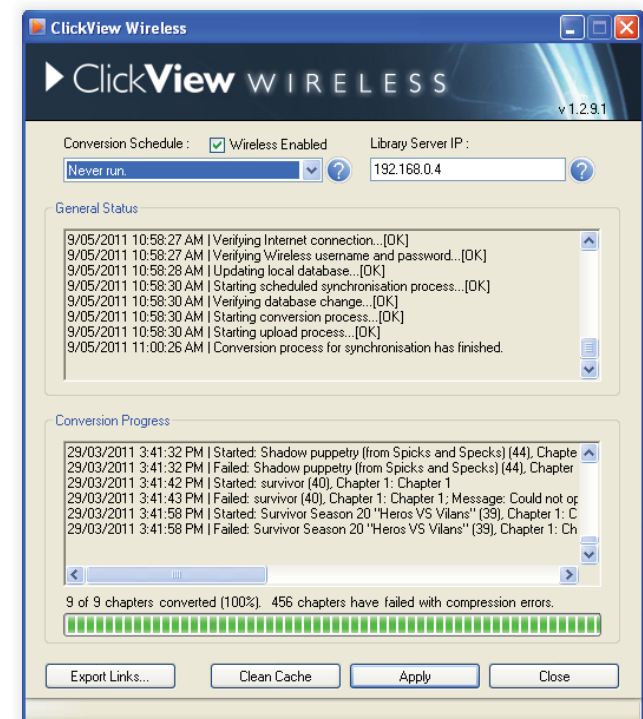
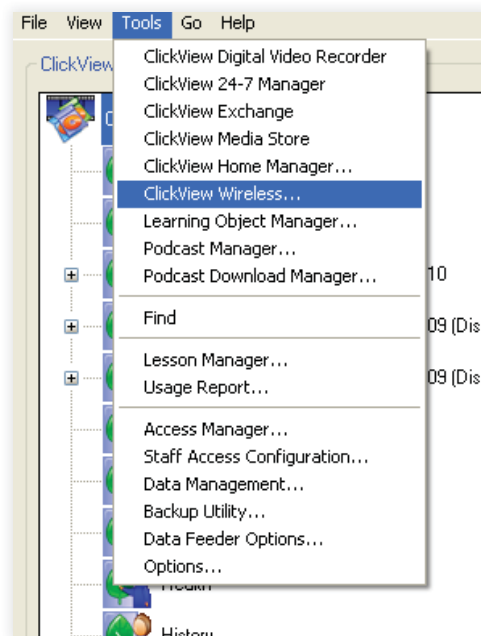
ClickView Wireless enables your ClickView videos to be delivered in a wireless format (WiFi) across the school network. Video is delivered via a web browser and accessed independently of the ClickView Player, so even if the ClickView Player is not installed, you can still watch your ClickView videos from any device connected via WiFi to your local network.

ClickView Home is an add-on product to the ClickView Library Server that operates as an online service allowing you to view your ClickView library videos from anywhere that has the internet. ClickView Home allows you to quickly embed ClickView videos within a Learning Management System, School Intranet or Blog, giving you greater flexibility with your school's ClickView library.

Generating ClickView Wireless Links

1. Click the **'Tools'** menu and then select the **'ClickView Wireless'** menu item.
2. To begin creating the Wireless videos, ensure that the **'Wireless Enabled'** checkbox is selected.
3. You can now choose the time that you wish the conversion to occur and select **'Apply'**.

NB: ClickView recommends selecting the Daily [6pm to 7am] Conversion schedule to avoid conversion during high ClickView usage times.

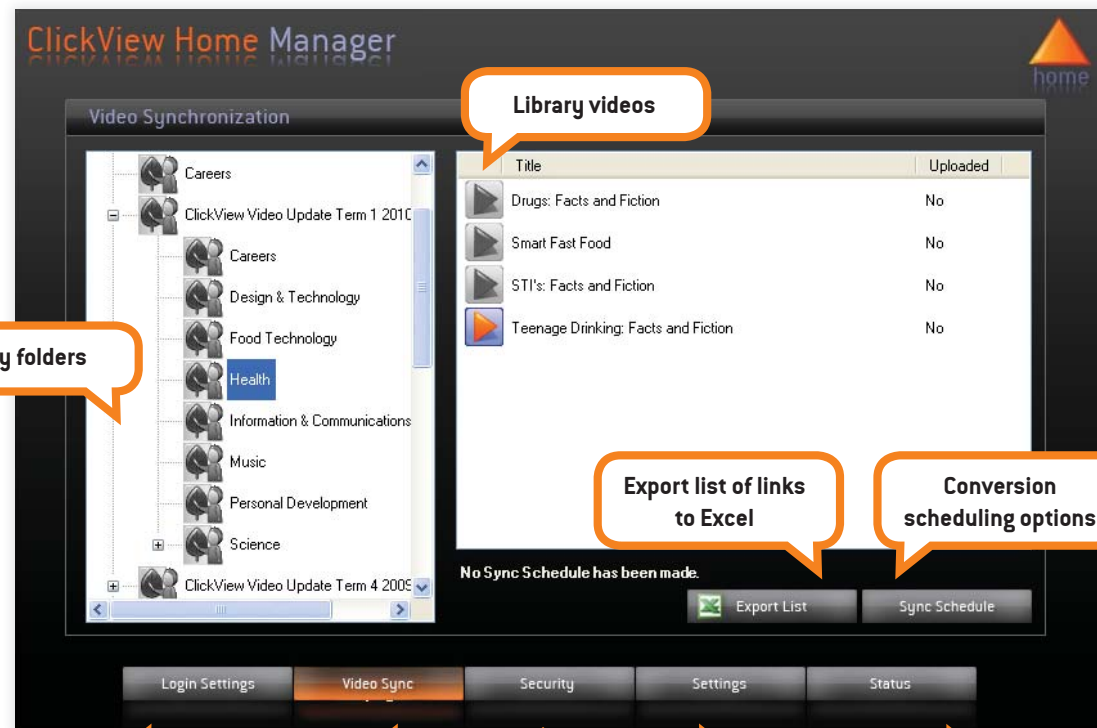


Generating ClickView Homes Links

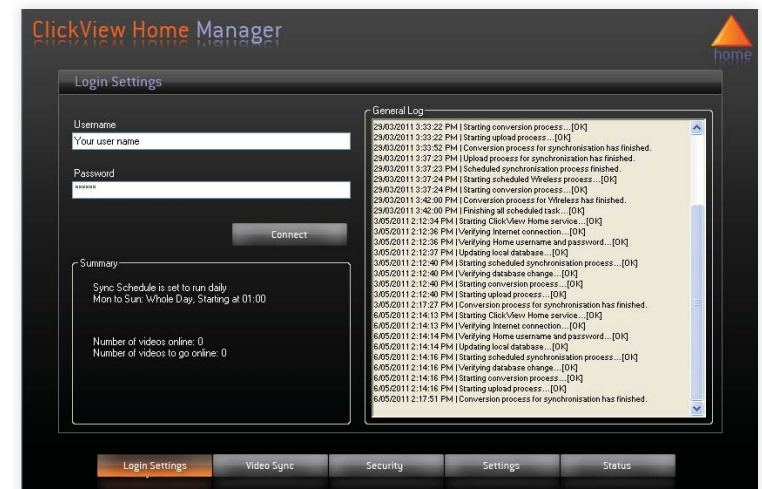
1. Click the **'Tools'** menu and then select the **'ClickView Home Manager'** menu item.
2. Login using your ClickView Home login details – please contact Customer Service if you require these.

NB: To setup ClickView Home, please read the ClickView Home quick start guide. If you have set up your ClickView Library Server to sync specific folders with ClickView Home, then you can set the synchronisation time in the **'Video Sync'** tab.

ClickView Home Manager - Video conversion controls



User login



User login and log information

Video conversion controls

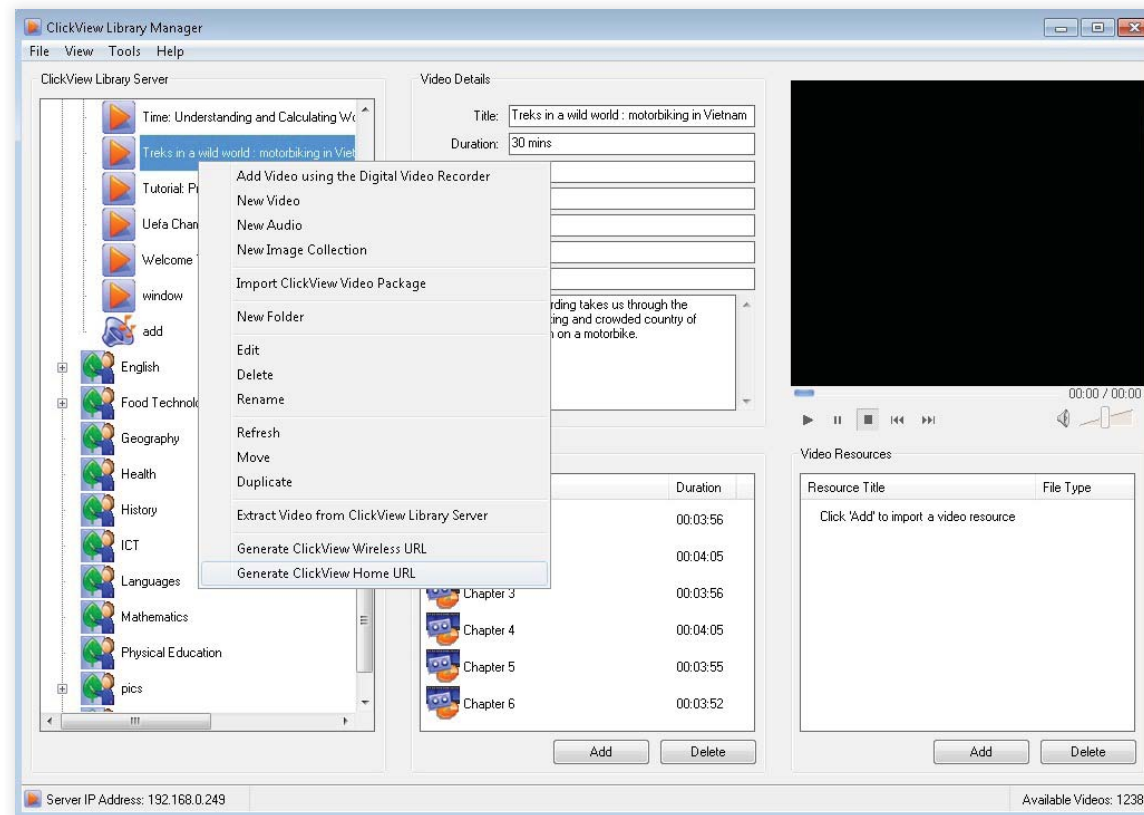
Restrict ClickView Home web access

Local Cache settings

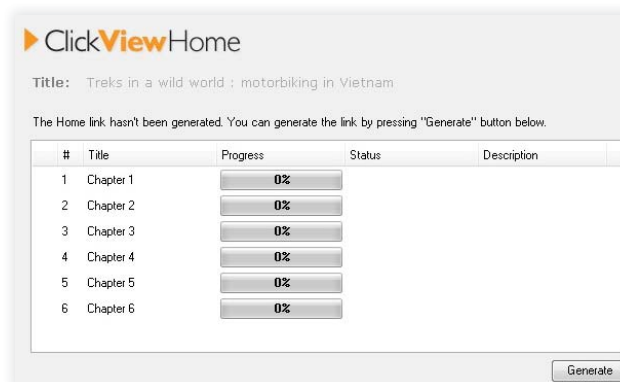
Conversion status details

Generating ClickView Wireless and ClickView Home URLs for individual videos.

1. Right click on a video within the ClickView Library Manager that doesn't have a ClickView Home or ClickView Wireless Link generated yet
2. From the drop down menu select '**Generate ClickView Wireless URL**' Or '**Generate ClickView Home URL**'
3. A pop-up window will appear showing the selected video's individual chapters. Click '**Generate**' to begin the conversion or upload process.

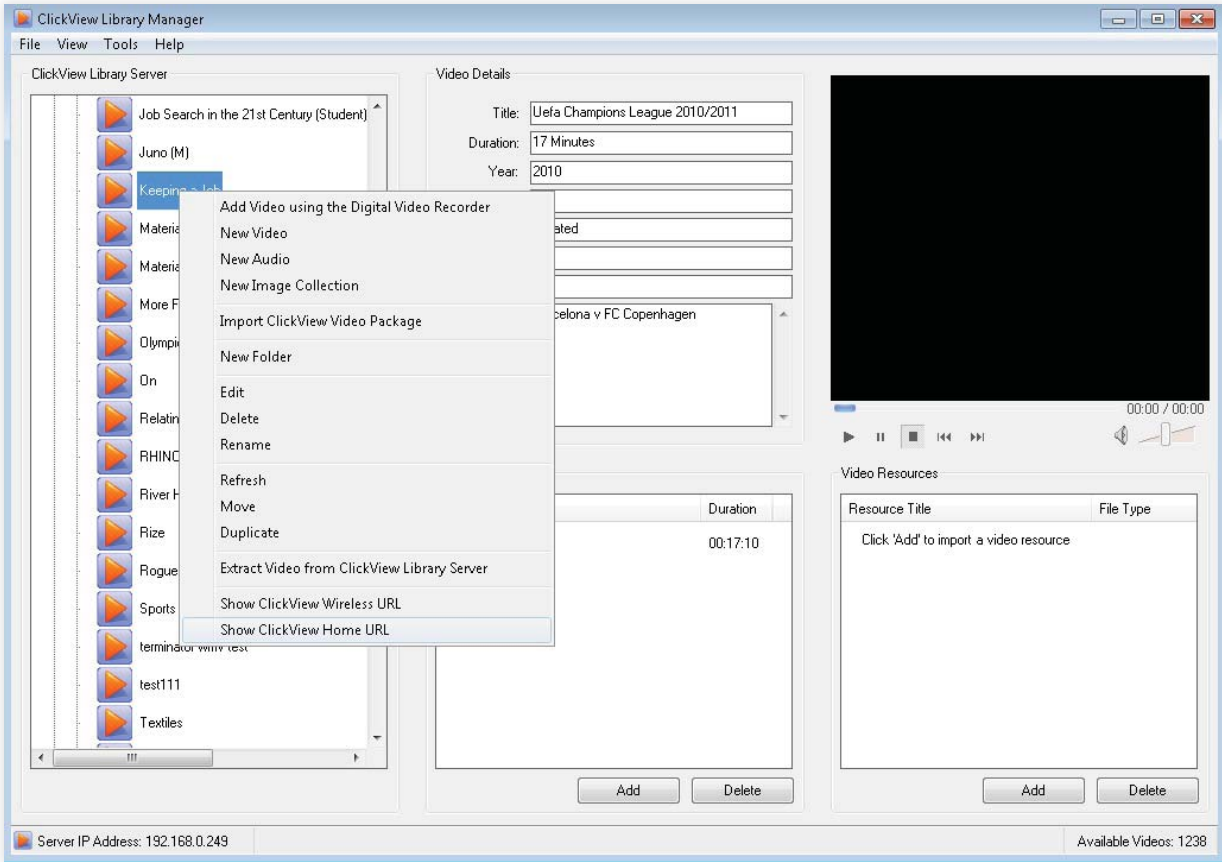


The conversion process will work through each chapter one by one.



Generating ClickView Wireless and ClickView Home URLs for individual videos. (Continued)

Once the video has been converted or uploaded successfully, you can view the link on you local network by right-clicking on the video and selecting 'Show ClickView Wireless URL' or 'Show ClickView Home URL'.



Introduction to the ClickView Web Player

The ClickView Web Player is the interface used when watching a ClickView Wireless or ClickView Home video.



Chapters menu



Video resources tab



Video information tab

